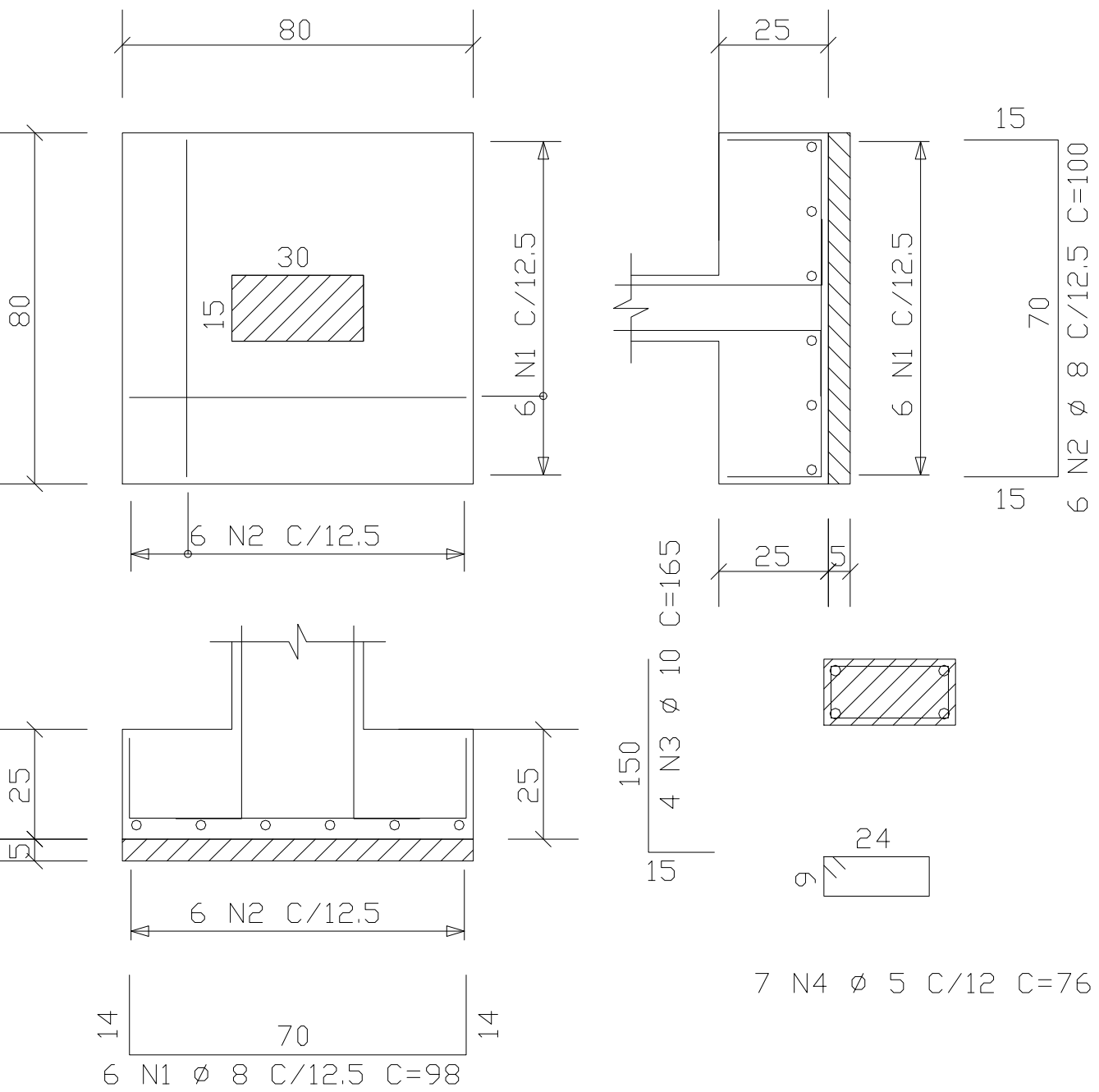


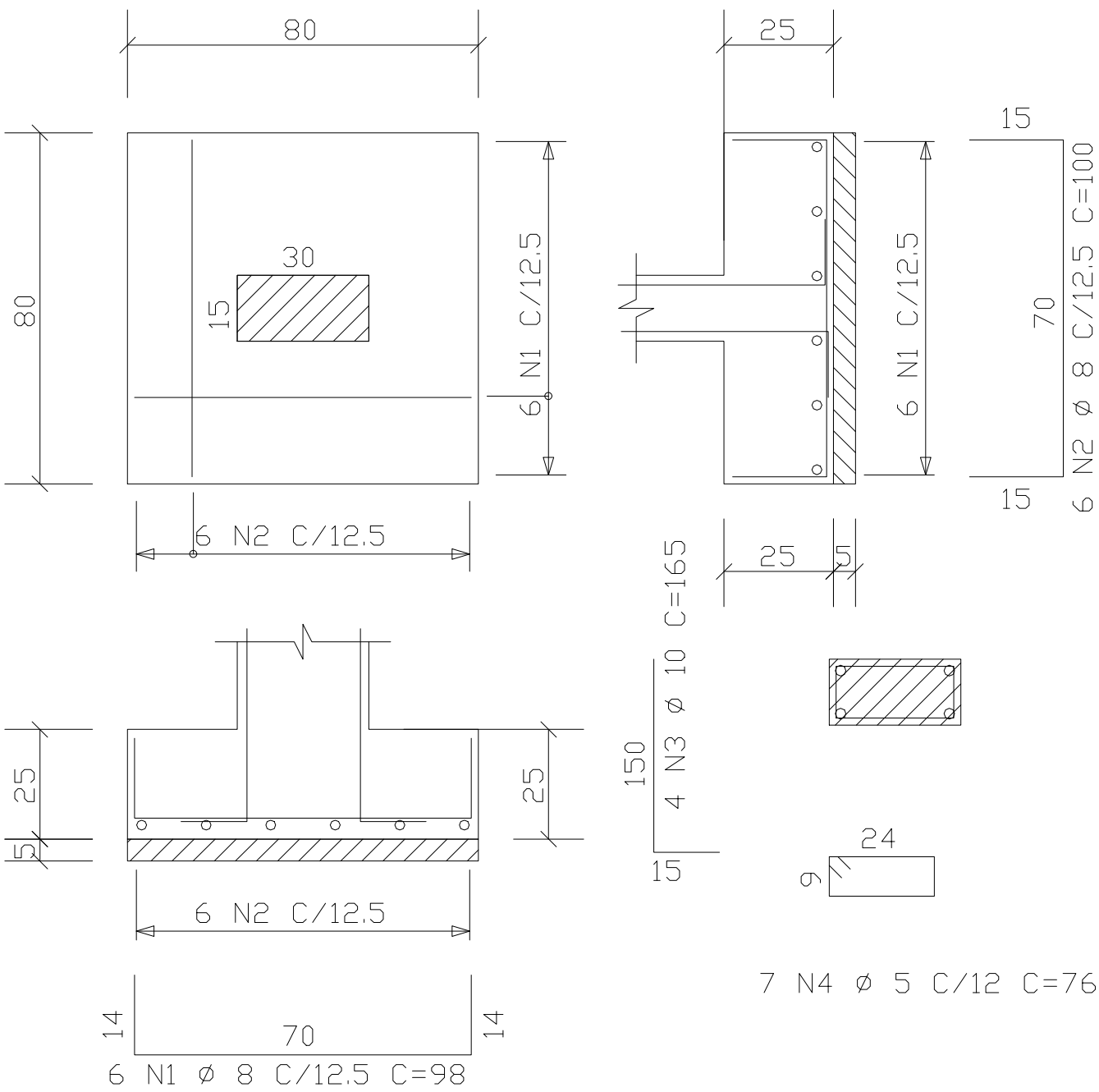
S1=S2=S3=S4-80/80/25

(4 X) (Esc 1:20)



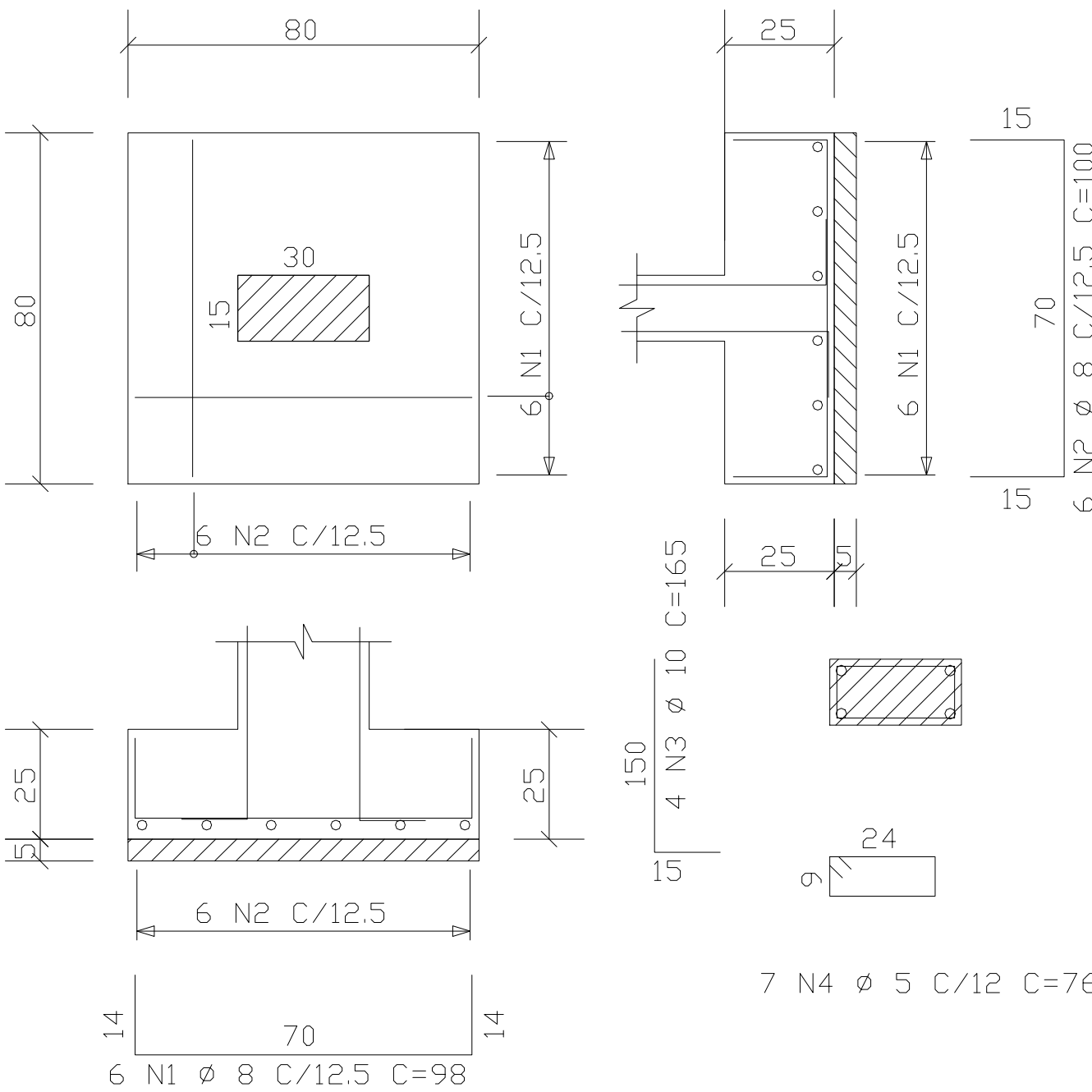
S5=S6=S7=S8-80/80/25

(4 X) (Esc 1:20)



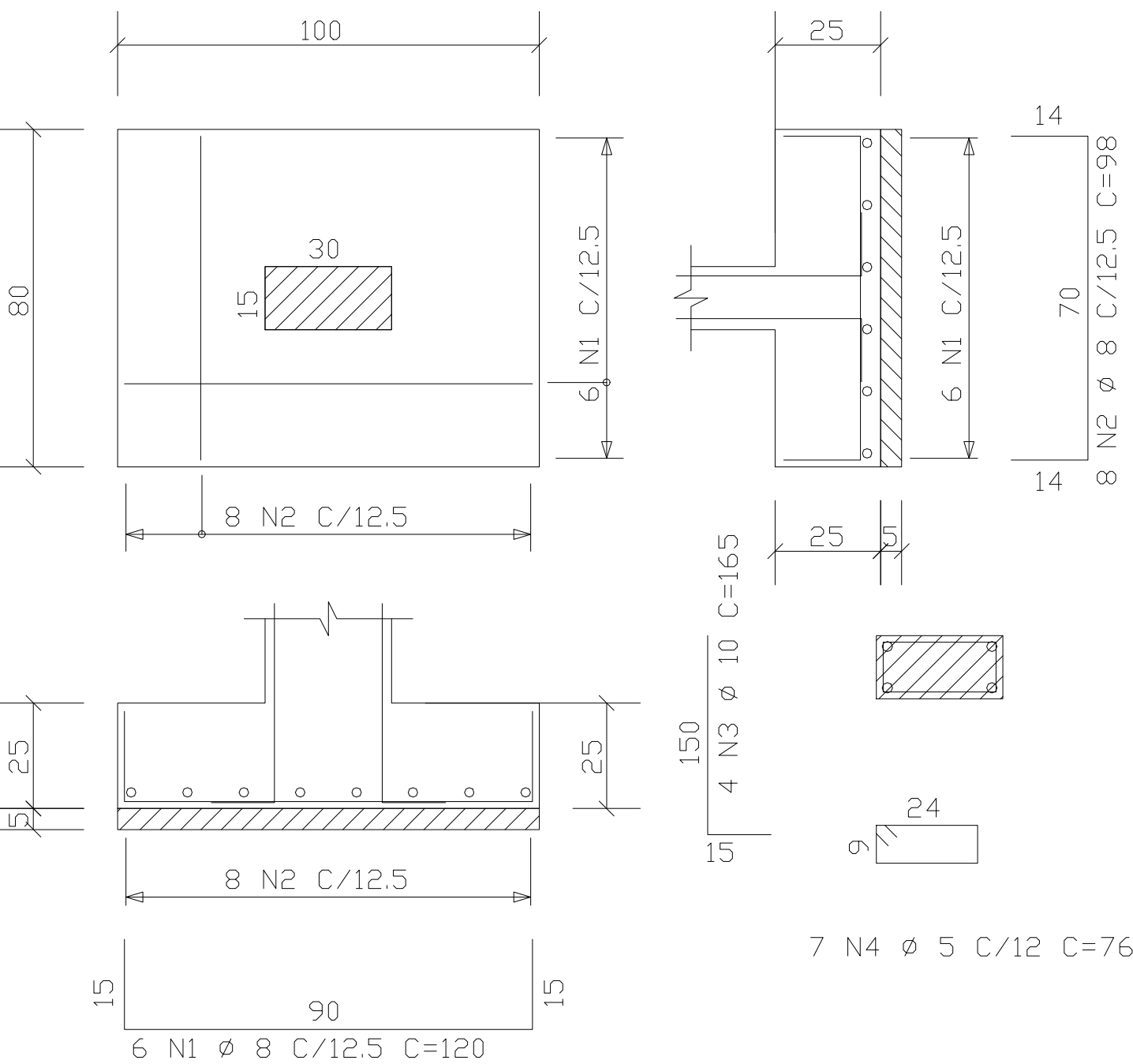
S9=S10=S11=S12-80/80/25

(4 X) (Esc 1:20)



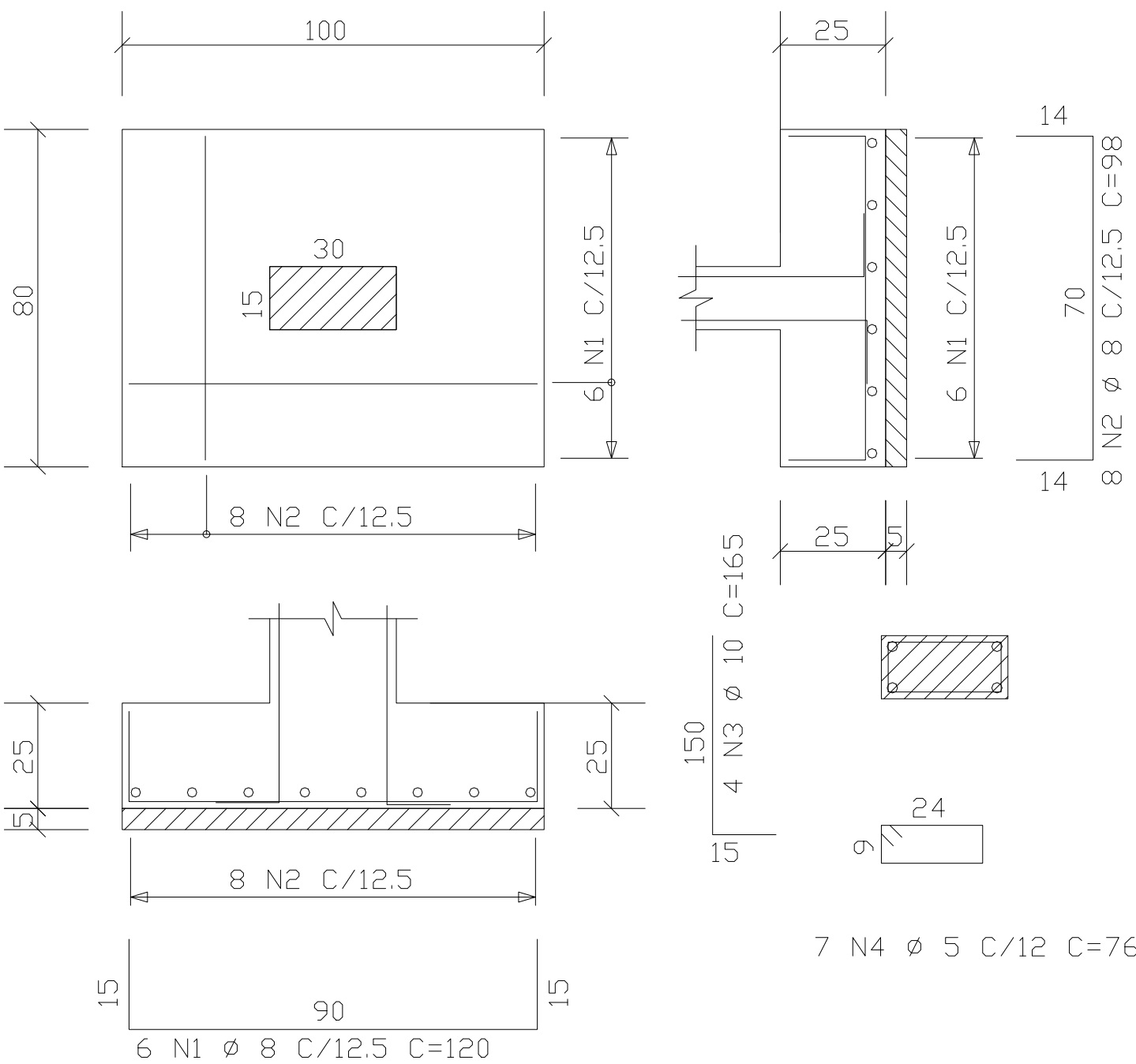
S13=S14=S15-80/100/25

(3 X) (Esc 1:20)



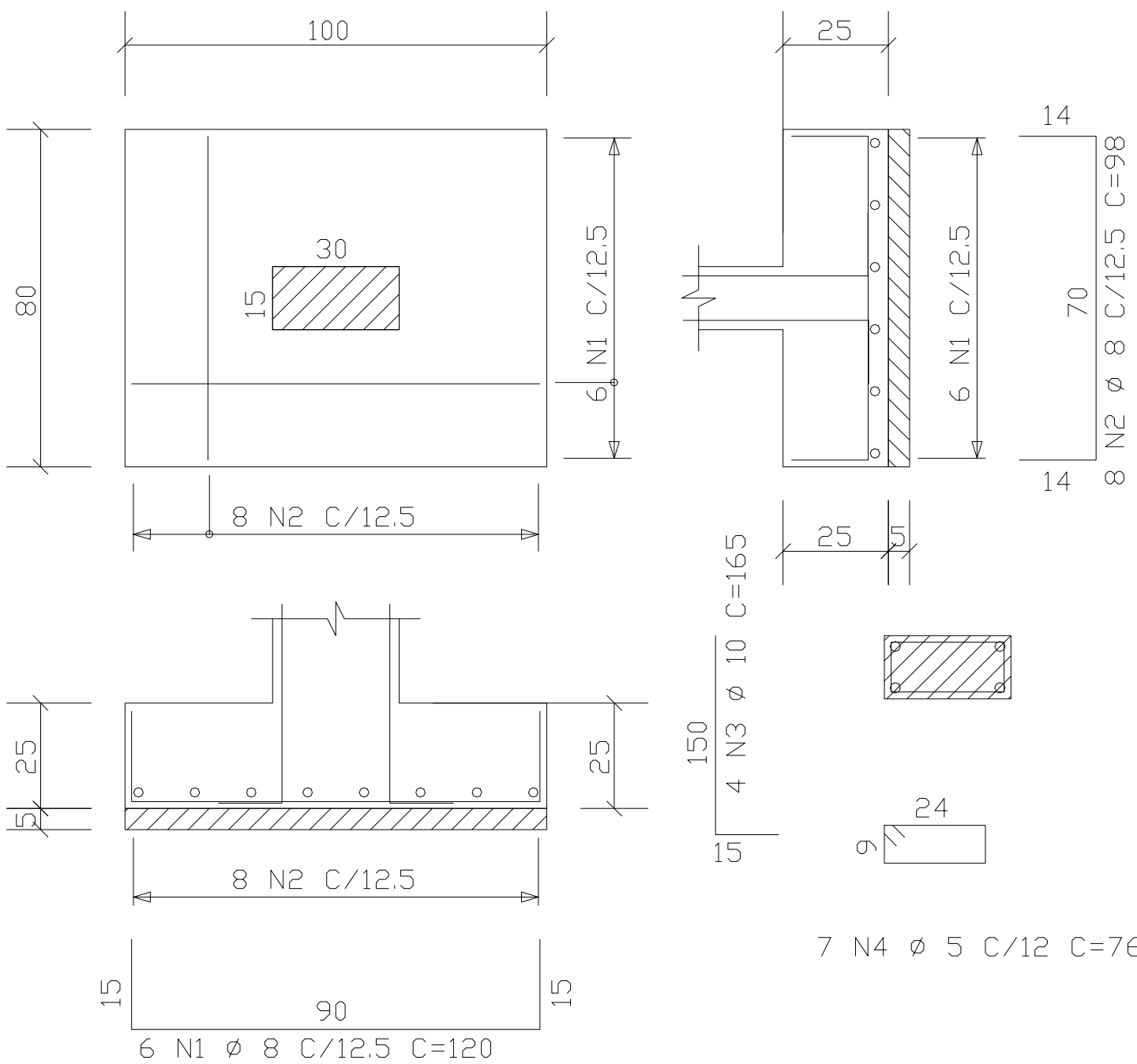
S16=S17=S18-80/100/25

(3 X) (Esc 1:20)

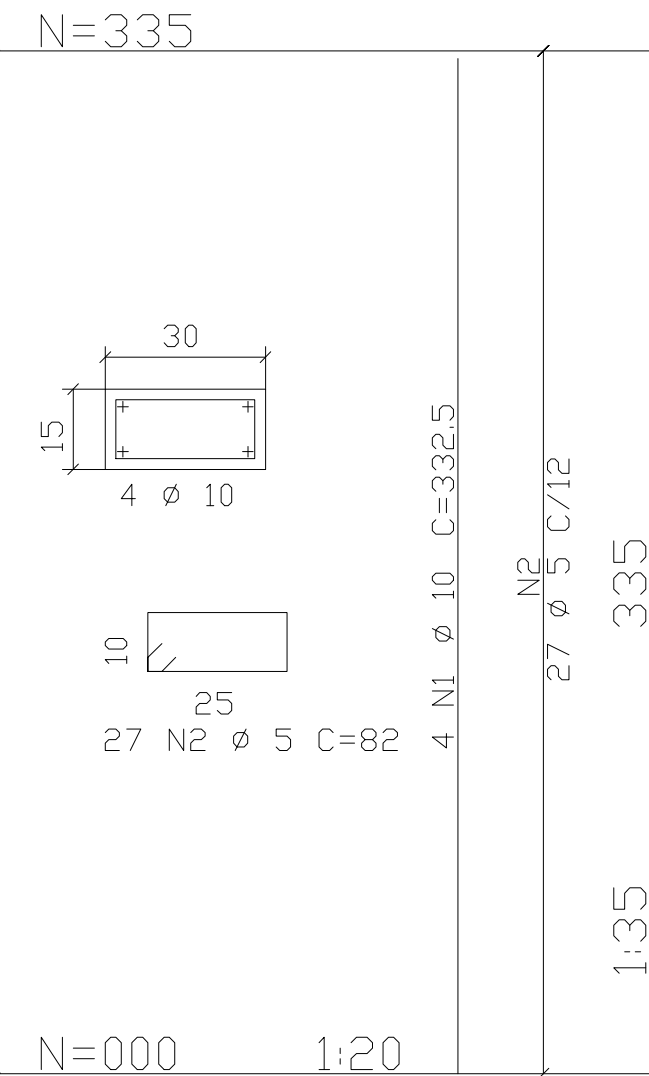


S19=S20=S21-80/100/25

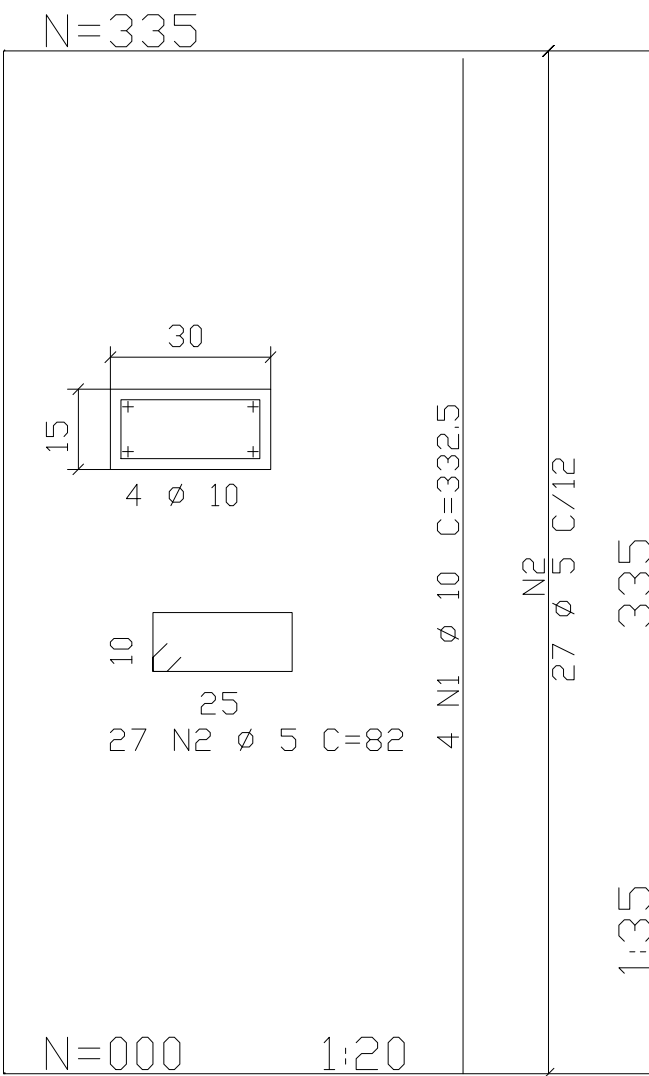
(3 X) (Esc 1:20)



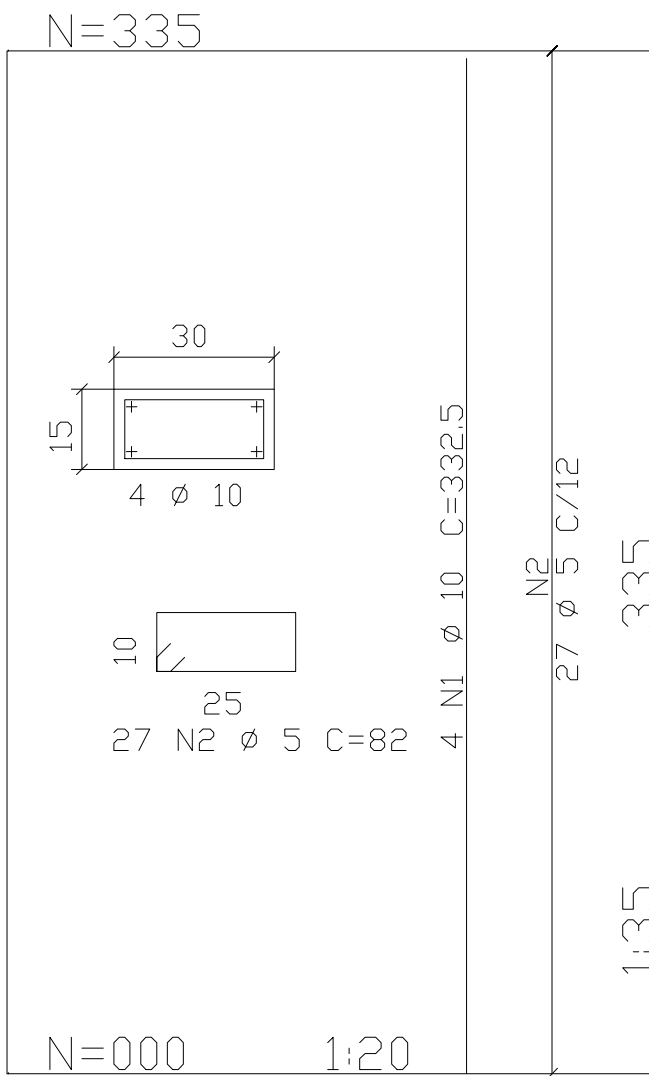
P1=P2=P3=P4-15/30
(x4)



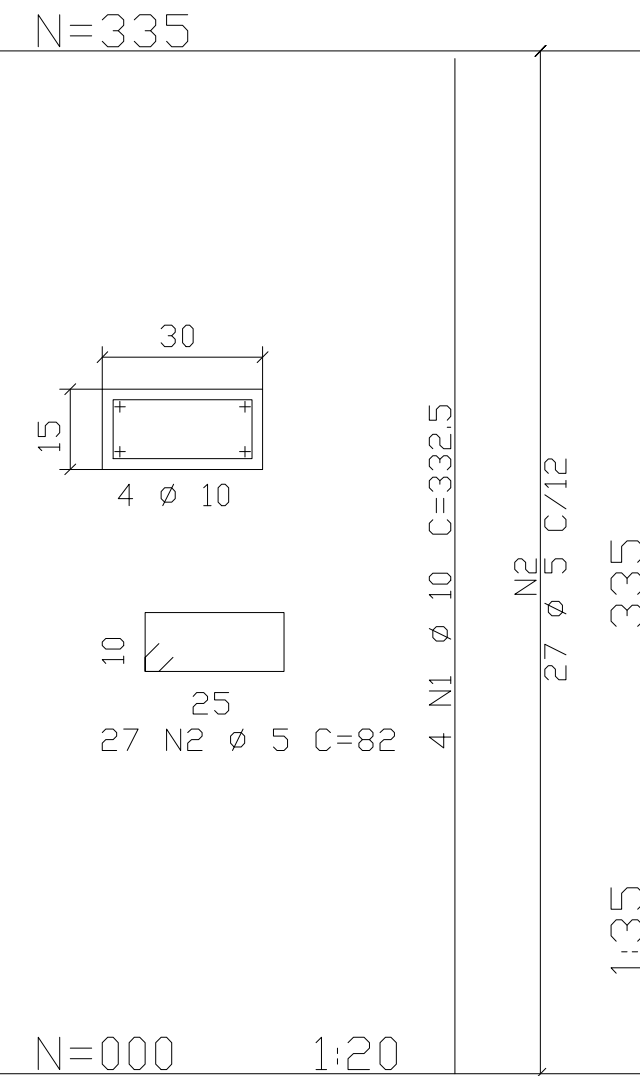
P5=P6=P7=P8-15/30
(x4)



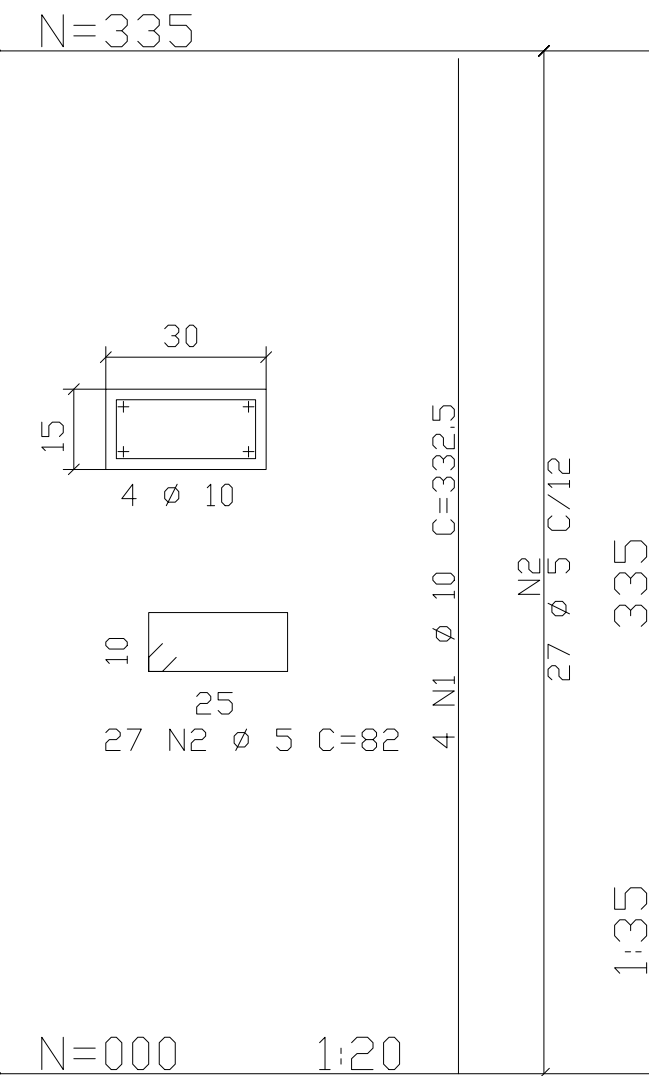
P9=P10=P11=P12-15/30
(x4)



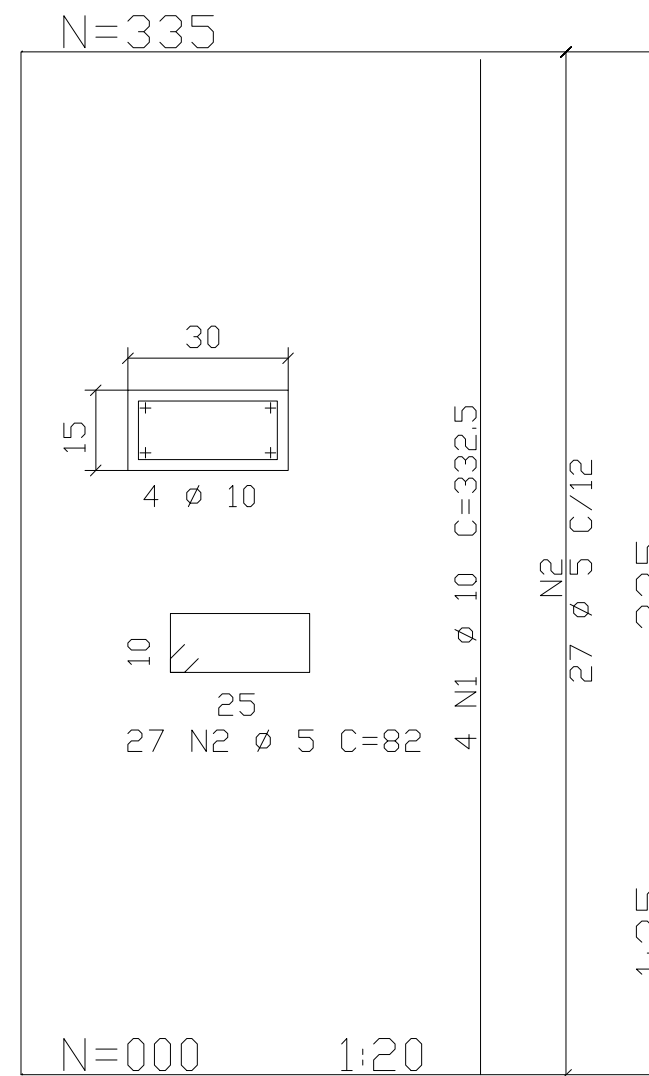
P13=P14=P15-15/30
(x3)



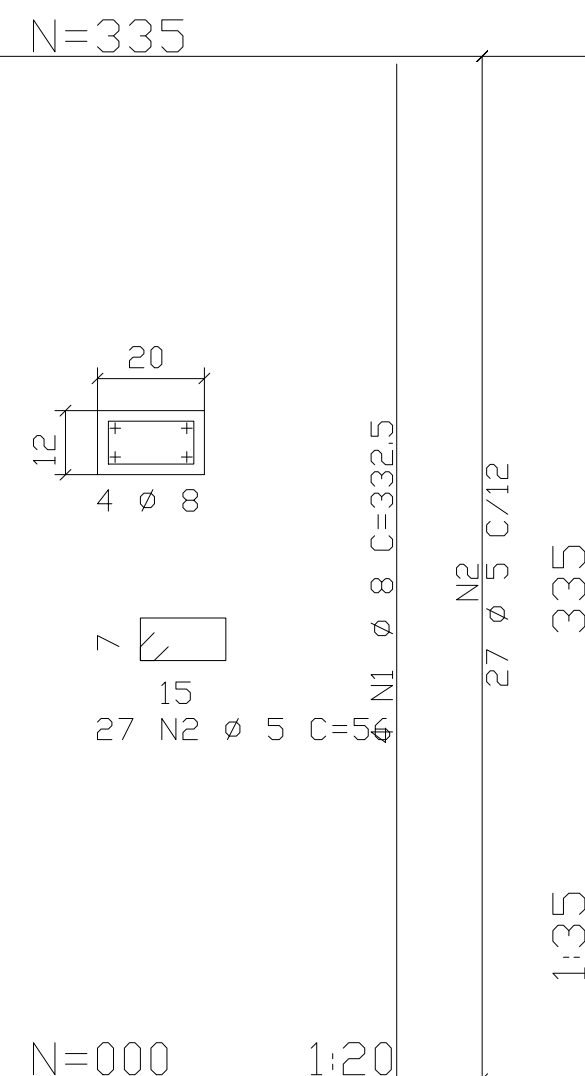
P16=P17=P18-15/30
(x3)



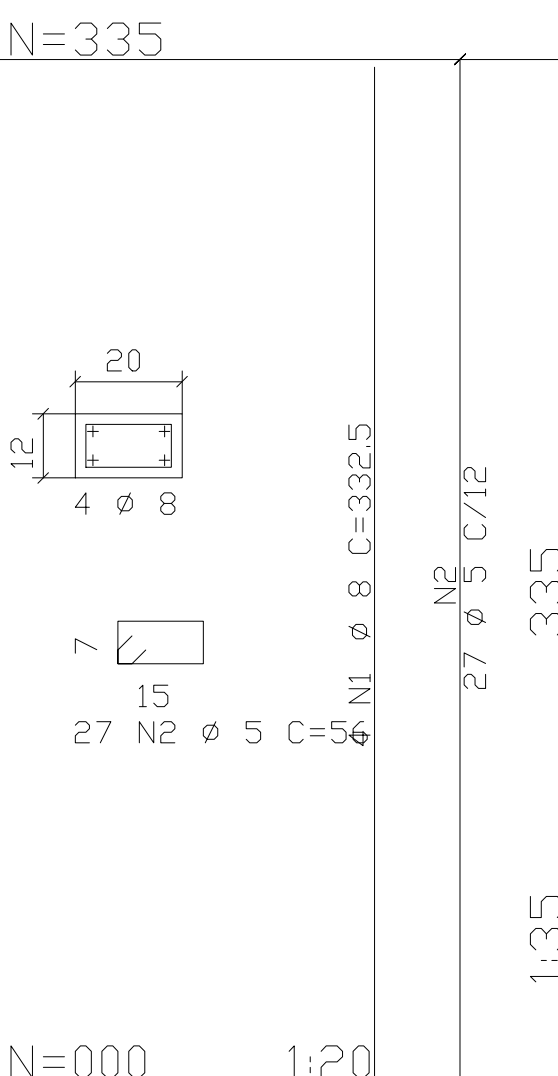
P19=P20=P21-15/30
(x3)



Pa=Pb=Pc-12/20
(x3)



Pd=Pe=Pf-12/20
(x3)



QUADRO DE FERROS

AÇO	POS	BIT (mm)	QUANT	COMPRIMENTO	
				UNIT (cm)	TOTAL (cm)
P1=P2=P3=P4=15/30 (x4)					
50B	1	10	16	332	5312
50B	2	5	108	82	8856
P5=P6=P7=P8=15/30 (x4)					
50B	1	10	16	332	5312
50B	2	5	108	82	8856
P9=P10=P11=P12=15/30 (x4)					
50B	1	10	16	332	5312
50B	2	5	108	82	8856
P13=P14=P15=15/30 (x3)					
50B	1	10	12	332	3984
50B	2	5	81	82	6642
P16=P17=P18=15/30 (x3) (X3)					
50B	1	10	12	332	3984
50B	2	5	81	82	6642
P19=P20=P21=15/30 (x3)					
50B	1	10	12	332	3984
50B	2	5	81	82	6642
Pa=Pb=Pc=12/20 (x3)					
50B	1	8	12	332	3984
50B	2	5	81	56	4536
Pd=Pe=Pf=12/20 (x3)					
50B	1	8	12	332	3984
50B	2	5	81	56	4536
S1=S2=S3=S4=80/80/25 (x4)					
50B	1	8	24	98	2352
50B	2	8	24	100	2400
50B	3	10	16	165	2640
50B	4	5	28	76	2128
S5=S6=S7=S8=80/80/25 (x4)					
50B	1	8	24	98	2352
50B	2	8	24	100	2400
50B	3	10	16	165	2640
50B	4	5	28	76	2128
S9=S10=S11=S12=80/80/25 (x4)					
50B	1	8	24	98	2352
50B	2	8	24	100	2400
50B	3	10	16	165	2640
50B	4	5	28	76	2128
S13=S14=S15=80/100/25 (x3)					
50B	1	8	18	120	2160
50B	2	8	24	98	2352
50B	3	10	12	165	1980
50B	4	5	21	76	1596
S16=S17=S18=80/100/25 (x3)					
50B	1	8	18	120	2160
50B	2	8	24	98	2352
50B	3	10	12	165	1980
50B	4	5	21	76	1596
S19=S20=S21=80/100/25 (x3)					
50B	1	8	18	120	2160
50B	2	8	24	98	2352
50B	3	10	12	165	1980
50B	4	5	21	76	1596

RESUMO AÇO CA 50-60			
AÇO	BIT (mm)	COMPR (m)	PESO (kg)
50B	5	667	107
50B	8	358	143
50B	10	417	263
Peso Total 50B =			513 kg

PROPRIETÁRIO:

PROJETO:

CONSTRUÇÃO:

1	14 MAR 12	LIBERADO PARA CONSTRUÇÃO			
0	25 NOV 10	EMIÇÃO INICIAL PARA APROVAÇÃO			
REV.	DATA	DESCRIÇÃO		APROV.	
IRAN CARDOSO PONTES		CLIENTE	PREFEITURA MUNICIPAL DE MACEIÓ		
ENGRº CIVIL 1338 D/AL CB 01051/85 AV TOMÁS ESPINDOLA 326 S.2012 - FAROL 57051-000 MACEIO/AL TELEFAX (82)33260058 e-mail: icpontes@uol.com.br		OBRA:	CONST. PRAÇA DA JUVENTUDE - ADMINIST. E CONVIVENCIA		
ESCALAS:		LOCAL:	COMPLEXO RESIDENCIAL BENEDITO BENTES, MACEIÓ / AL		
INDICADAS					
EVENTO	NOME	DATA	TÍTULO:		
PROJETO	Iran C. Pontes	23 NOV 10	ESTRUTURA EM CONCRETO ARMADO SAPATAS E PILARES - FORMAS E ARMADURAS		
DESENHO	Lucas Emanuel	25 NOV 10			
CONFERIDO	Iran C. Pontes	12 MAR 12			
DESENHO Nº		REV.	SUBST. DES. N.		REV.
PRANCHA 06/10		1			